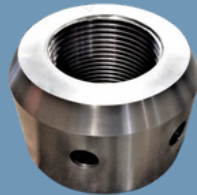
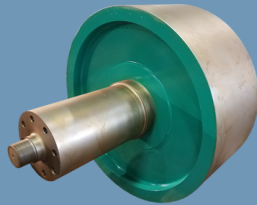


Finch

Manufacturing
& Technology, LLC



540 Montgomery Ave
West Pittston, PA 18643
(P) 570-655-2277
(F) 570-655-6758
POC: Samantha Zinnen
(M) 215-478-5701
Szinnen@finchmt.com
CAGE Code: 7CFE9
Unique Entity Identifier
(UEI): PNEZGWQUN7JD
DUNS: 002263513



Core Competencies:

- Industrial Kilns, Dryers, & Components
- Metal Part & Component Manufacturing
- Reverse Engineering of Components
- Afterburner (APE)
- DEMIL Operations & Fragmentation Chamber
- Lock Repair, Stop Logs, & Culvert Valves
- Base Frames & Heavy Supporting Structures
- Incinerators – Manufacture, Repair, & Service
- Marine Construction – Screens, Augers, Shafts
- Welding, Boring, Drilling, Bending & Assembly
- Refurbishment & Modernization Projects
- Field Service & Repairs
- Mining, Drilling, & Power Equipment
- Specialized Nuts, Bolts, & Fasteners
- Engineering Design & Project Management

NAICS CODES

237990 332311 332312 332410 332439
332710 332721 332999 333131 333248 333922
333994 333998 336611 541330 562213

ISO 9001:2015
Certified Company

DESIGN-BUILD-INSTALL (DBI)

www.FinchMT.com



Finch Manufacturing & Technology, LLC (FMT) manufactures, repairs, and assembles large equipment, parts, and systems with expertise in rotary processing equipment.

Our manufacturing capabilities and project management skills enable FMT to design, engineer, and fabricate components for complex projects, ranging from fragmentation chambers to underwater assemblies.



Past Performance



- **United States Coast Guard - Baltimore, MD: Lifting Sling System**
- **USDA - Manhattan, KS: Swine Pens**
- **US Army - Tobyhanna, PA: Reverse-engineered Trailer Shock Towers**
- **US Army - Tooele, UT: Afterburners**